

# Product Specifications



## LED DOMO PRO Armatur P65 SILVER

### FEATURES

- Linear Design
- System Light Efficacy >100 LPW
- Easy Installation & Maintenance
- IP65/ IP30(PIR)
- Five Years Warranty
- ETL, DLC, CE, RoHS, CB, WEEE

### TYPICAL APPLICATIONS

- Warehouse/Manufacturing Facilities
- Convention Centers/Sporting Arenas
- Big-Box Retail Stores
- Cold Storage Facilities
- Gymnasiums

### SPECIFICATIONS

#### PERFORMANCE

LED Chip	OSRAM
Lumen Output (IES)	10,000 lm
Power Consumption	100 W
Efficacy (IES)	>100 lm/W
Beam Angle	70/135°, 30/100°, 90°, 110°, 150°, 60/100°
Color Temperature	4500~5500K (2500~5500K Optional)
CRI	≥80
Lumen Maintenance	L70>70,000 hours (Calculated Using TM-21 Calculator)
Input Voltage	100-277 VAC (347/480 VAC Optional) Dimming Optional
Power Factor	0.95 minimum

#### ENVIRONMENTAL

IP Rating	IP65/ IP30(PIR)
Operating Temperature	-30 to 45°C (-22 to 113°F)
Storing Temperature	-40 to 80°C (-40 to 167°F)
Humidity	15% to 95% RH

#### PHYSICAL

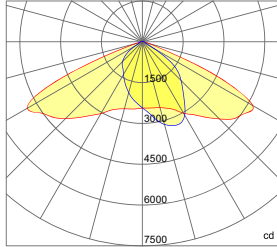
Dimensions (L×W×H)	650×159×114 mm (25.6×6.3×4.5 in) (Steel Cable)
Weight	4.3 kg (9.5 lbs) (Steel Cable)
Mounting Options	Steel Cable, Surface Mount
Fixture Material	Aluminum Alloy

#### WARRANTY

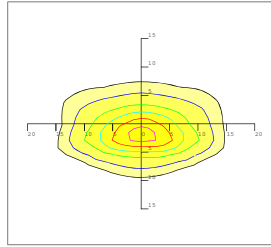
5 Years



**70x135 DEGREE LENS (Forward 5°)**



— 0.0~180.0  
— 90.0~270.0

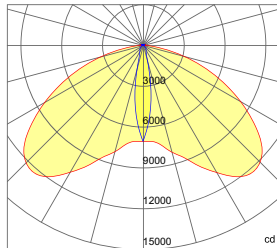


Mounting Height 7m, 0 Tilt,  
50LUX-5LUX

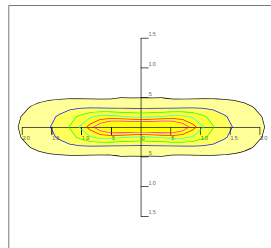
Illumination-70/135 Degree Beaming Angle		
Height	Rectangular Light Spot	LUX
5m	9x24m	90LUX
6m	11x29m	66LUX
7m	13x34m	50LUX
8m	14x39m	39LUX
9m	15x43m	31LUX

Beam Angle (50% max)	70x135 DEG
Field Angle (10%)	100x160 DEG
Luminous Flux (IES)	10,000 lm
Light Efficacy (IES)	100 lm/W
Cutoff Classification	Cutoff

**30x100 DEGREE LENS**



— 0.0~180.0  
— 90.0~270.0

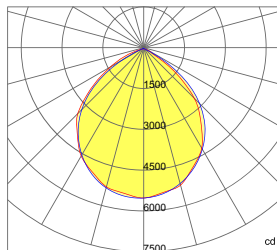


Mounting Height 10m, 0 Tilt,  
50LUX-5LUX

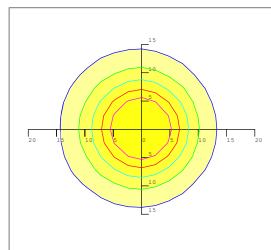
Illumination-30/100 Degree Beaming Angle		
Height	Rectangular Light Spot	LUX
6m	3x11m	231LUX
7m	3x13m	170LUX
8m	4x15m	131LUX
9m	4x17m	104LUX
10m	4x19m	84LUX

Beam Angle (50% max)	30x100 DEG
Field Angle (10%)	50x120 DEG
Luminous Flux (IES)	10,000 lm
Light Efficacy (IES)	>100 lm/W
UGR	13/39
Cutoff Classification	Semi-Cutoff

**90 DEGREE LENS**



— 0.0~180.0  
— 90.0~270.0



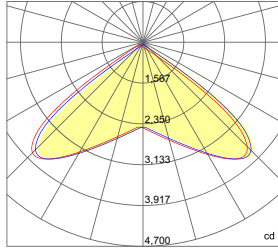
Mounting Height 12m, 0 Tilt,  
50LUX-5LUX

Illumination-90 Degree Beaming Angle		
Height	Beam Diameter	LUX
5m	φ 14m	132LUX
6m	φ 16m	99LUX
7m	φ 19m	76LUX
8m	φ 23m	58LUX
9m	φ 24m	46LUX

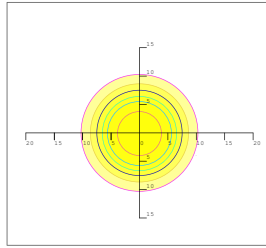
Beam Angle (50% max)	90 DEG
Field Angle (10%)	130 DEG
Luminous Flux (IES)	10,000 lm
Light Efficacy (IES)	100 lm/W
UGR	25
Cutoff Classification	Cutoff

# Photometrics

## 110 DEGREE LENS



— 0.0~180.0  
— 90.0~270.0

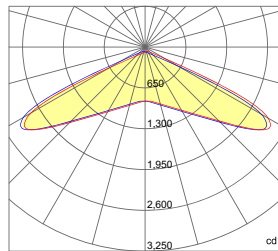


Mounting Height 10m, 0 Tilt,  
50LUX-5LUX

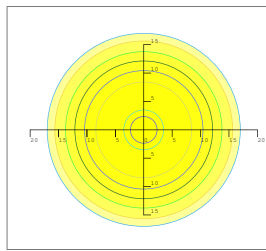
Illumination-110 Degree Beaming Angle		
Height	Rectangular Light Spot	LUX
2m	4.0x4.3m	595LUX
4m	8.0x8.6m	149LUX
6m	12.0x13.0m	66LUX
8m	15.9x17.3m	37LUX
10m	19.9x21.6m	24LUX

Beam Angle (50% max)	110 DEG
Luminous Flux (IES)	10,000 lm
Light Efficacy (IES)	100 lm/W
Cutoff Classification	Cutoff

## 150 DEGREE LENS



— 0.0~180.0  
— 90.0~270.0

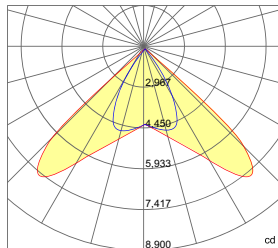


Mounting Height 10m, 0 Tilt,  
50LUX-5LUX

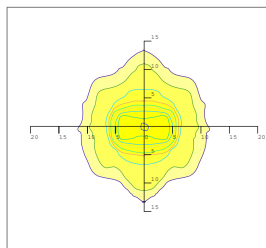
Illumination-150 Degree Beaming Angle		
Height	Rectangular Light Spot	LUX
2m	1.6x5.3m	303LUX
4m	3.7x10.7m	76LUX
6m	5.5x16.0m	34LUX
8m	7.4x21.4m	19LUX
10m	9.2x26.7m	12LUX

Beam Angle (50% max)	150 DEG
Luminous Flux (IES)	10,000 lm
Light Efficacy (IES)	100 lm/W
Cutoff Classification	Cutoff

## 60 x 100 DEGREE LENS



— 0.0~180.0  
— 90.0~270.0



Mounting Height 10m, 0 Tilt,  
50LUX-5LUX

Illumination-60x100 Degree Beaming Angle		
Height	Rectangular Light Spot	LUX
2m	1.5x2.2m	986LUX
4m	2.9x4.4m	246LUX
6m	4.4x6.6m	110LUX
8m	5.8x8.7m	62LUX
10m	7.3x10.9m	40LUX

Beam Angle (50% max)	60x100 DEG
Luminous Flux (IES)	10,000 lm
Light Efficacy (IES)	100 lm/W
Cutoff Classification	Cutoff

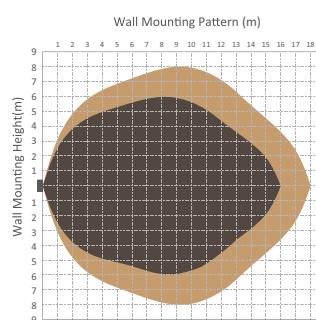
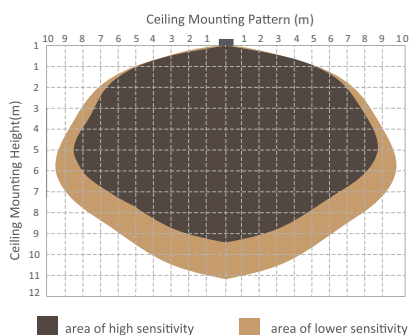


# Microwave Sensor & Dimmer Option



Technical Data			
Operating voltage	120-277V	Standby power	approx. 0.5W
Switched power	Max.capacitive load: 800W @277V, 400W@120V	Heating time	20s
Detection area	10/50/75/100%, can be customized	Sensor principle	Microwave motion
Hold time	5S/30S/1min/5min/10min/20min/30min, can be customized	Microwave frequency	5.8GHz+/-75MHz
Standby period	0s/10s/1min/5min/10min/30min/1h/+∞can be customized	Microwave power	<0.2mw
Standby dimming level	10%/20%/30%/50% can be customized	Detection range	Max. (φxH):18m x 10m
Daylight threshold	2~50lux daylight/twilight/darkness, can be customized	Detection angle	30° ~ 150°
Operating temperature	-35°C ~ +70°C	Mounting height	Max.10m
IP rating	IP20, IP65(mounting in Hytronik special box)	Certificate	ETL, FCC

## Detection Pattern



## Setting

	Detection Area			Hold-time			Daylight Sensor			Stand-by Period (Corridor function)			Stand-by Dimming Level				
	1	2		1	2	3	1	2		1	2	3	1	2			
I	●	●	100%	●	●	●	5s	●	●	Disable	●	●	●	0s	●	●	10%
II	●	○	75%	●	●	○	30s	●	○	50lux	●	●	○	10s	●	○	20%
III	○	●	50%	●	○	●	1min	○	●	10lux	●	○	●	1min	○	●	30%
IV	○	○	10%	●	○	○	5min	○	○	2lux	●	○	●	5min	○	○	50%
V				○	●	●	10min				○	●	●	10min			
VI				○	●	○	20min				○	●	○	30min			
VII				○	○	○	30min				○	○	●	1h			
VIII											○	○	○	+∞			

- Detection area can be reduced by selecting the combination on the DIP switches to fit precisely for each specific application.
- Hold-time means the time period you would like to keep the lamp on 100% after the person has left the detection area.
- The daylight threshold can be set on DIP switches, to fit for particular application.
- This is the time period you would like to keep at the low light output level before it is completely switched off in the long absence of people. Note: 0 means on/off control; +∞ means 2 steps of dimming control, fixture never switch off.
- This is the dimmed low light output level you would like to have after the hold-time in the absence of people.



# Infrared Sensor & Dimmer Option



Technical Data	
<ul style="list-style-type: none"> <li>120/277 VAC, 50/60Hz</li> <li>- Load @120 VAC 0-800W Ballast or Incandescent</li> <li>- Load @277 VAC 0-1200W Ballast</li> </ul>	<ul style="list-style-type: none"> <li>Sensitivity: None, Low, Med, Max; Default Max</li> <li>Setpoint: None, 1-250 fc, Auto; Default 4 fc</li> <li>Ramp up time: None, 1-60 sec.; Default None</li> </ul>
<ul style="list-style-type: none"> <li>230 VAC, 50Hz; Load 0-300W Ballast</li> </ul>	<ul style="list-style-type: none"> <li>Fade Down Time: None, 1-60 sec.; Default None</li> </ul>
<ul style="list-style-type: none"> <li>Relay Life Rating: 200,000 Cycles (120/277 VAC); 50,000 Cycles (230 VAC)</li> </ul>	<ul style="list-style-type: none"> <li>Operating Temperature: -40-167°F (-40-75°C)</li> <li>Operating Humidity: 20-90%</li> </ul>
<ul style="list-style-type: none"> <li>High Mode: 0-10 V; Default 10 V</li> <li>Low Mode: Off, 0-9.8 V; Default 1 V</li> <li>Time Delay: 30 Sec., 5-30 min.; Default 5 min.</li> <li>Cut Off Delay: None, 1-60 min. 1-5 hrs.; Default 1hr.</li> </ul>	<ul style="list-style-type: none"> <li>Weight: 2.8 oz (80 grams)</li> <li>IP66, CE Compliant</li> <li>TUV, UL and cUL Listed</li> <li>Five Year Warranty</li> </ul>

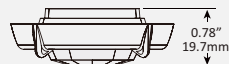
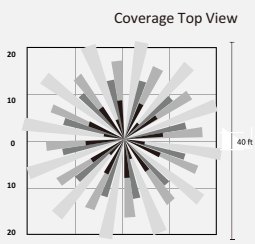
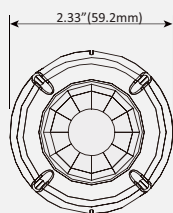
## Coverage Pattern

Density and range of the coverage pattern are determined by the type of lens and mounting height

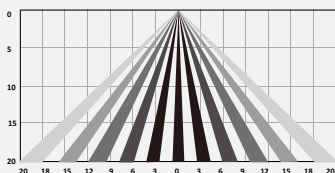
### L3: 360° Coverage

L3 has a high density lens that covers a 40' diameter area at a height of 20'.

FSP-L3 High Density/Reduced Range Lens



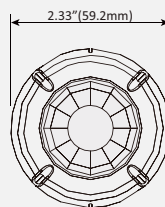
Coverage Side View



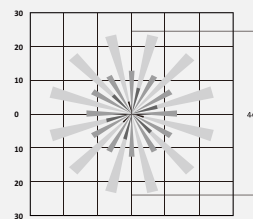
### L2: 360° Coverage

L2 lens provides a 44' diameter coverage area when mounted at a height of 8'.

L2 Low Density/Wide Range Lens



Coverage Top View



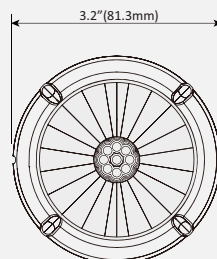
Coverage Side View



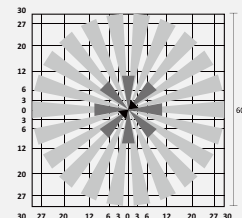
### L4: 360° Coverage

L4 is designed for mounting at heights between 30' to 40'. Its coverage area can be up to 60' in diameter when mounted at 40'.

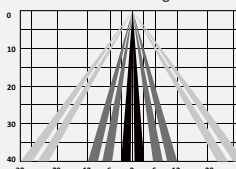
L4 40 Foot High Bay Lens



Coverage Top View



Coverage Side View

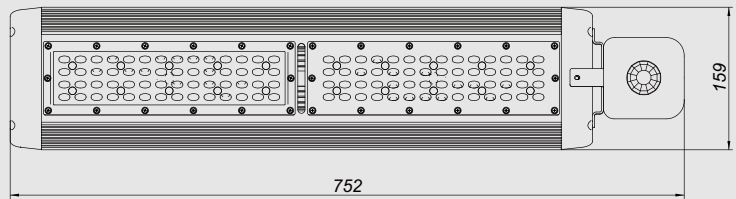


## Setting

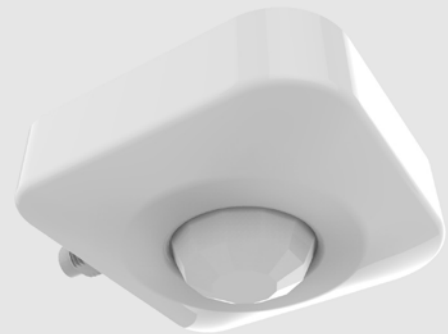
Refer to Dimmer&Remotion operation guidance.



## PIR Sensor Option

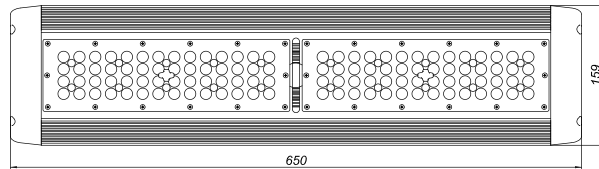
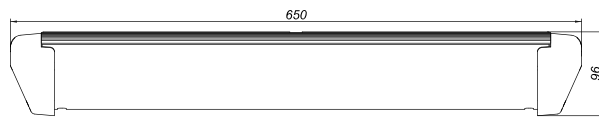


Input Voltage	AC 120-277 V, 60HZ
Load Requirement	800VA @ 120V AC Fluorescent Ballasts NO Min 1200VA @ 277V AC Fluorescent Ballasts NO Min
Load Horsepower	1/6HP
Time Delay Adjustment	Fixed 15 seconds to 30 minutes
Operating Temperature	32° to 131° F ( 0° to 55 ° C )
Humidity range	0%-90%RH, non-condensing
Coverage range	Up to 30 ft mounting / 360 Degrees
Terminal Line	Black-Hot, White-Neutral, Red-Load
Warranty	2 Years
IP Rating	IP 30
Sensor Type	IR Sensor



## Mounting Options

### Steel Cable



### Surface Mount Bracket

