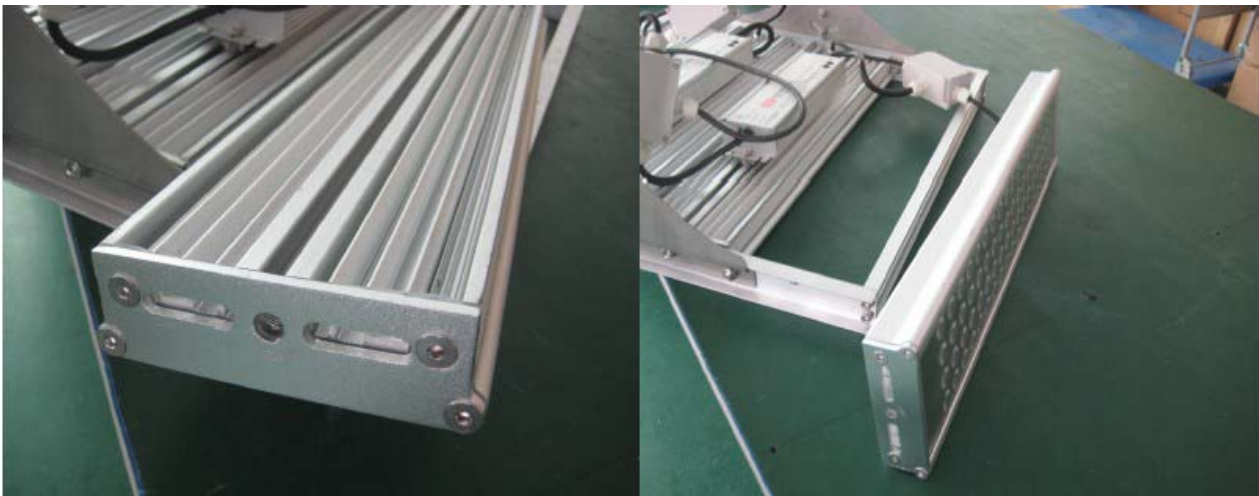
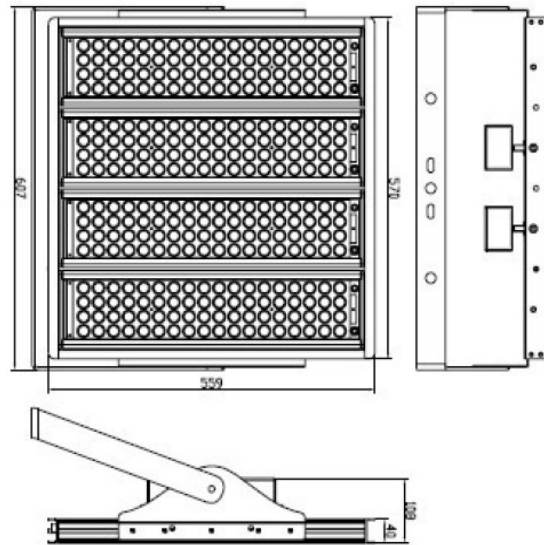


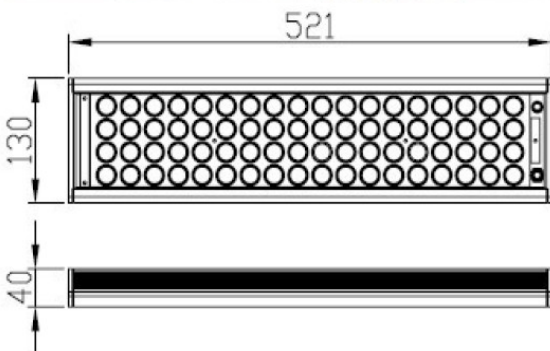
LED & LED - LED High Pole light HP320

| Technical specification | |
|-------------------------|-----------------------------------|
| Model No. | HP320 |
| | |
| | |
| Light Source | CREE LED 288*1W |
| | |
| Color Temperature | 2700-6500K |
| Color-rendering Index | >80 |
| Beam Angle | 10°-90° Optional |
| Input Voltage | AC 85-265V, 50/60Hz |
| Power Factor | >0.9 |
| Power Consumption | 320W |
| Initial Flux | >30, 000LM |
| Working Enviroment | -30°C~+50°C |
| Life Span | >50,000Hrs |
| IP Rating | IP65 |
| Material | Aluminum Profile + Tempered Glass |
| Fixture Dimension | 607*559*108MM |
| THD | <5% |
| Net Wegith | 18.3KGS |
| Warranty | 3 Years |

Product picture



Can **adjust the module's angle** from 15° - 40°, illumination will be more even.



Aging temperature test: **56 degree.**

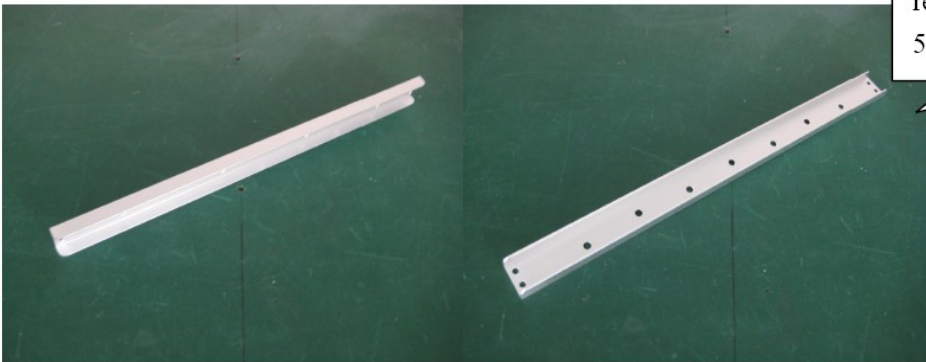


Bracket:



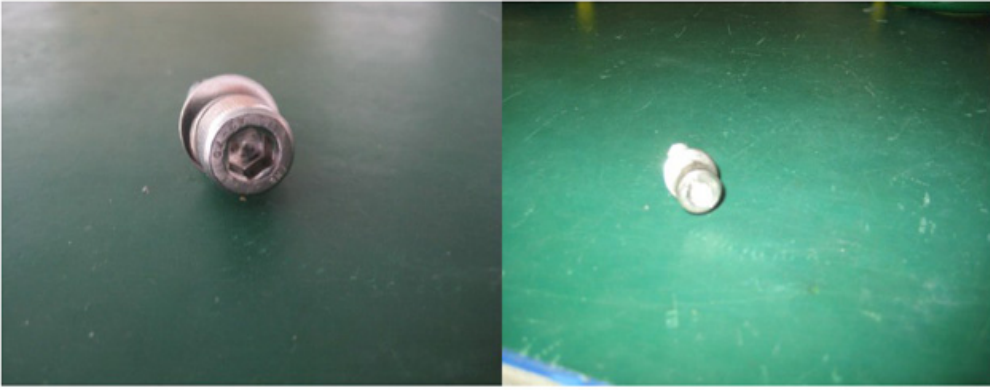
Structure made according to Philips traditional metal halide light frame standard, easy to replace, **304 stainless steel**, strength resistance; thickness: 6mm, can also choose different thickness depend on customer's request.

Frame:



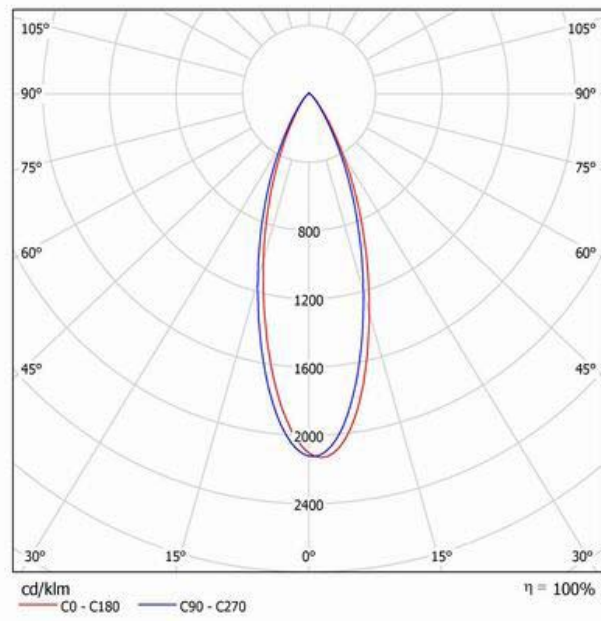
U-shaped, bigger strength resistance, **6063-T5**; size 559*570*40mm

Screw:

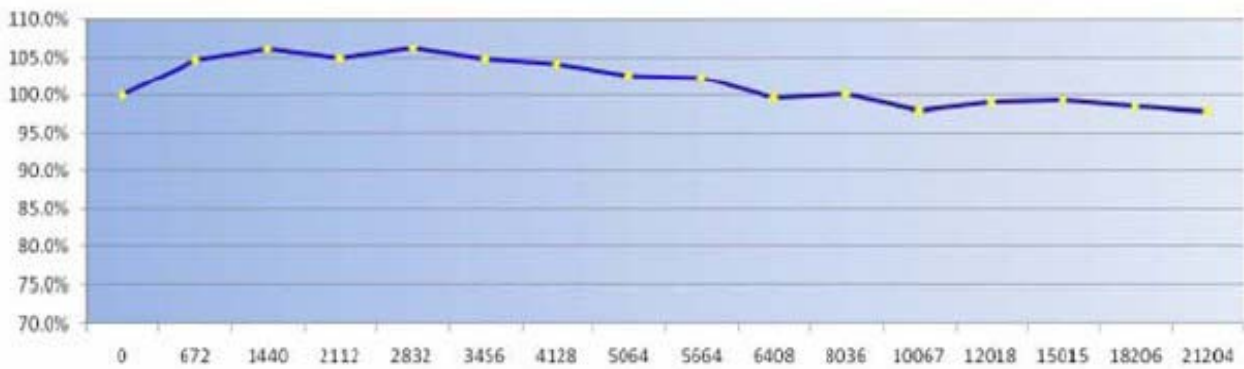


304 stainless steel

Light distribution chart



Light decay chart



Parts Material

Thickening 6063 aviation aluminium shell

High light efficiency super-white tempered glass

High quality waterproof silicone strip

Thickening stainless steel bracket

High quality 304 stainless steel screws

High efficiency imported LED chip

CREE 



Unique interval design between modules, high wind resistance level, to make it more safe.

Well-known brand LED powersupply, safe and reliable, longlifespan.

High efficiency 6063 aviation aluminium for heat dissipation

Flexible lighting design, when installed, each module can be adjusted its angle 